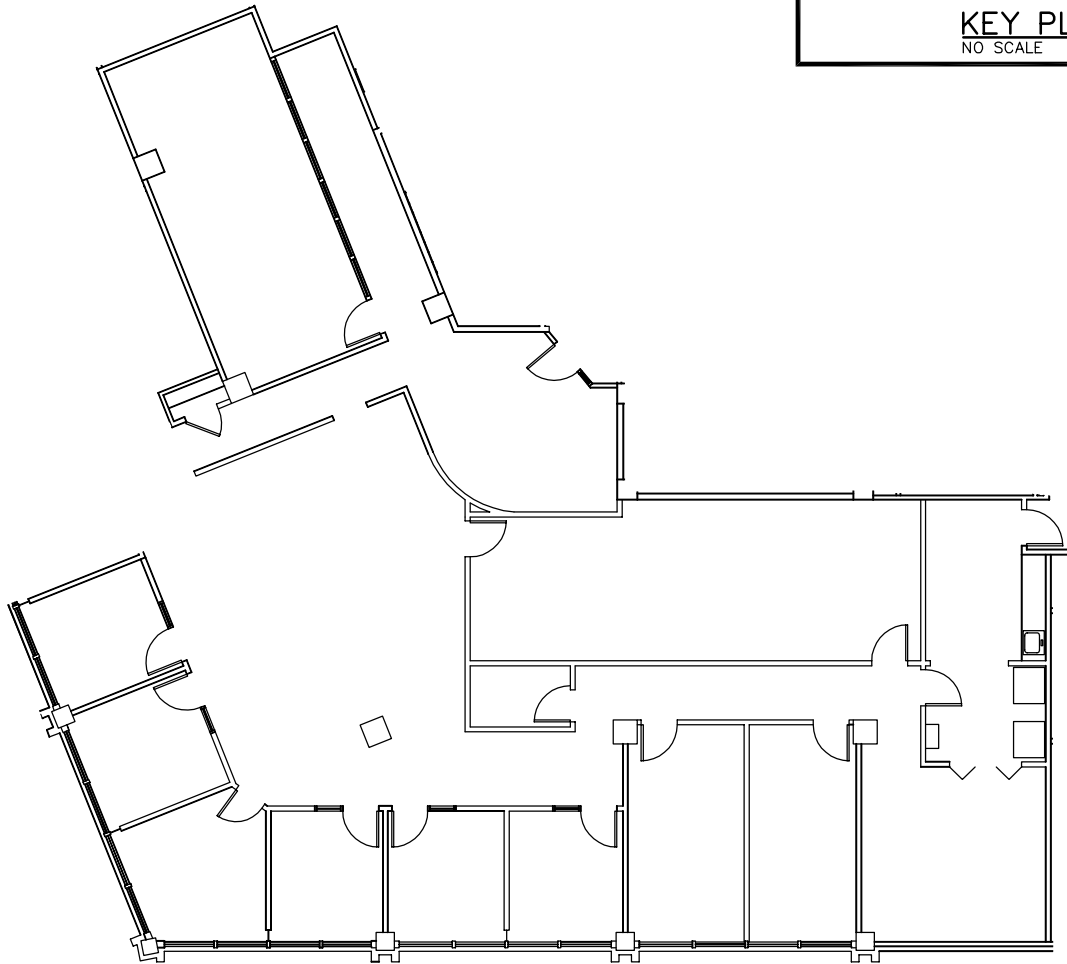




KEY PLAN
NO SCALE



PARTIAL FIFTH FLOOR PLAN
SCALE: 1/16"=1'-0"

41
STATE

SUITE 501

4,579± R.S.F.

TOWN OF COLONIE
ALBANY COUNTY * NEW YORK

41 STATE STREET
PARTIAL FIFTH FLOOR PLAN

DESIGNED BY _____
DRAWN BY ECS
REVIEWED BY _____



DATE 01/12/11
SCALE AS NOTED
SHEET 1 OF 1