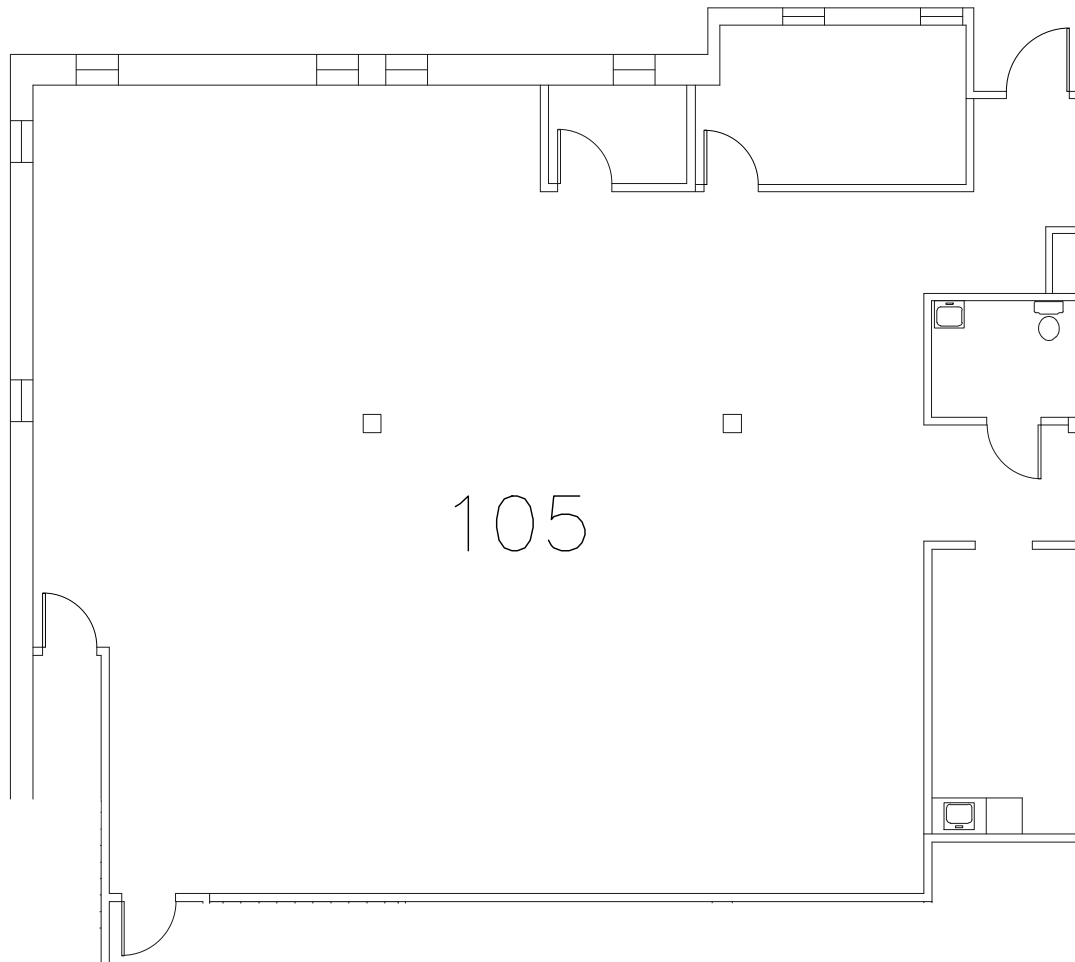


KEY PLAN  
NO SCALE



PARTIAL FIRST FLOOR PLAN  
SCALE: 3/32"=1'-0"

SUITE 105

3,101± R.S.F.

TOWN OF GUILDERLAND  
ALBANY COUNTY \* NEW YORK

1873 WESTERN AVENUE  
PARTIAL FIRST FLOOR PLAN

DESIGNED BY \_\_\_\_\_  
DRAWN BY RMS  
REVIEWED BY \_\_\_\_\_



DATE 07/26/17  
SCALE AS NOTED  
SHEET 1 OF 1