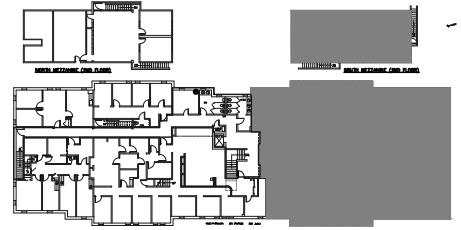
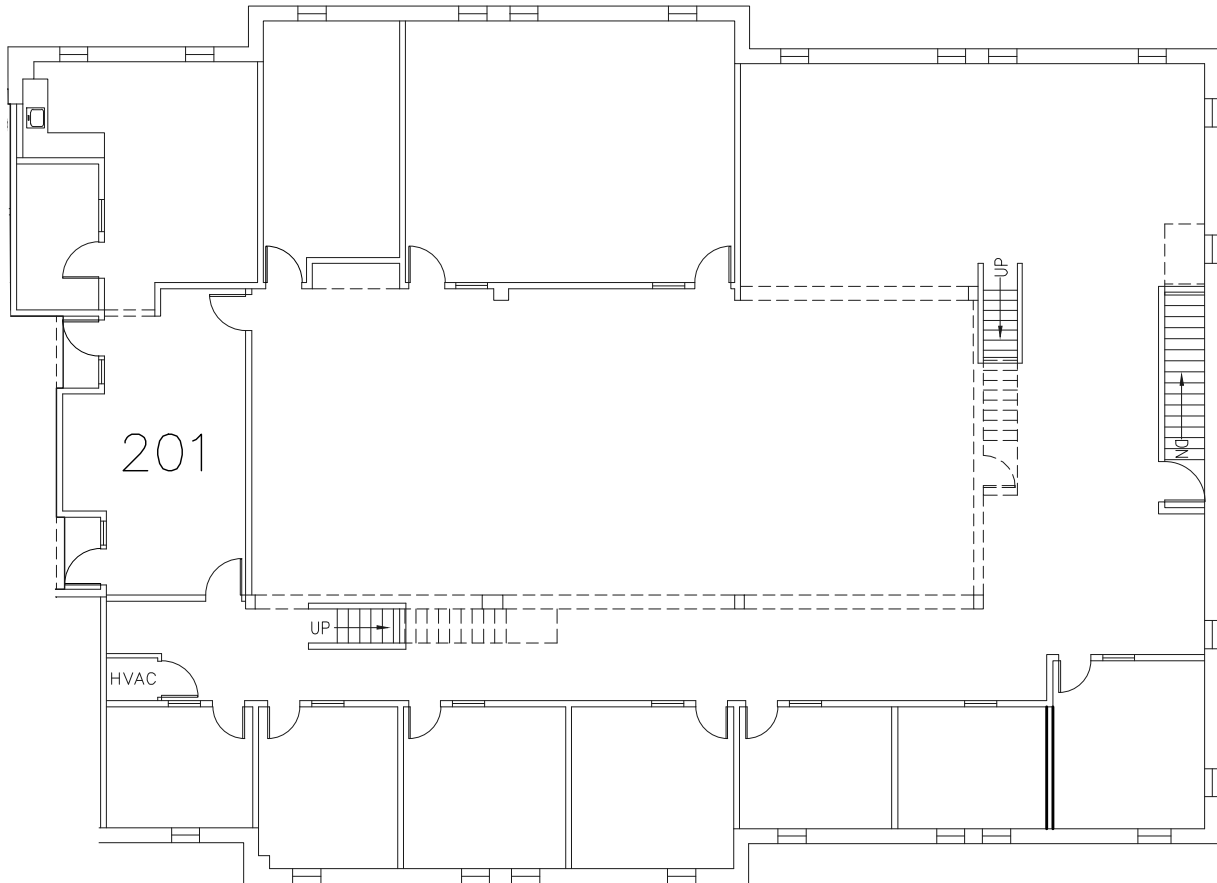


SOUTH MEZZANINE (2ND FLOOR)
SCALE: 1/16"=1'-0"



KEY PLAN
NO SCALE



PARTIAL SECOND FLOOR PLAN
SCALE: 1/16"=1'-0"

SUITE 201

9,271± R.S.F.

TOWN OF GUILDERLAND
ALBANY COUNTY * NEW YORK

1873 WESTERN AVENUE
PARTIAL SECOND FLOOR PLAN

DESIGNED BY _____
DRAWN BY RMS
REVIEWED BY _____



DATE 07/26/17
SCALE AS NOTED
SHEET 1 OF 1