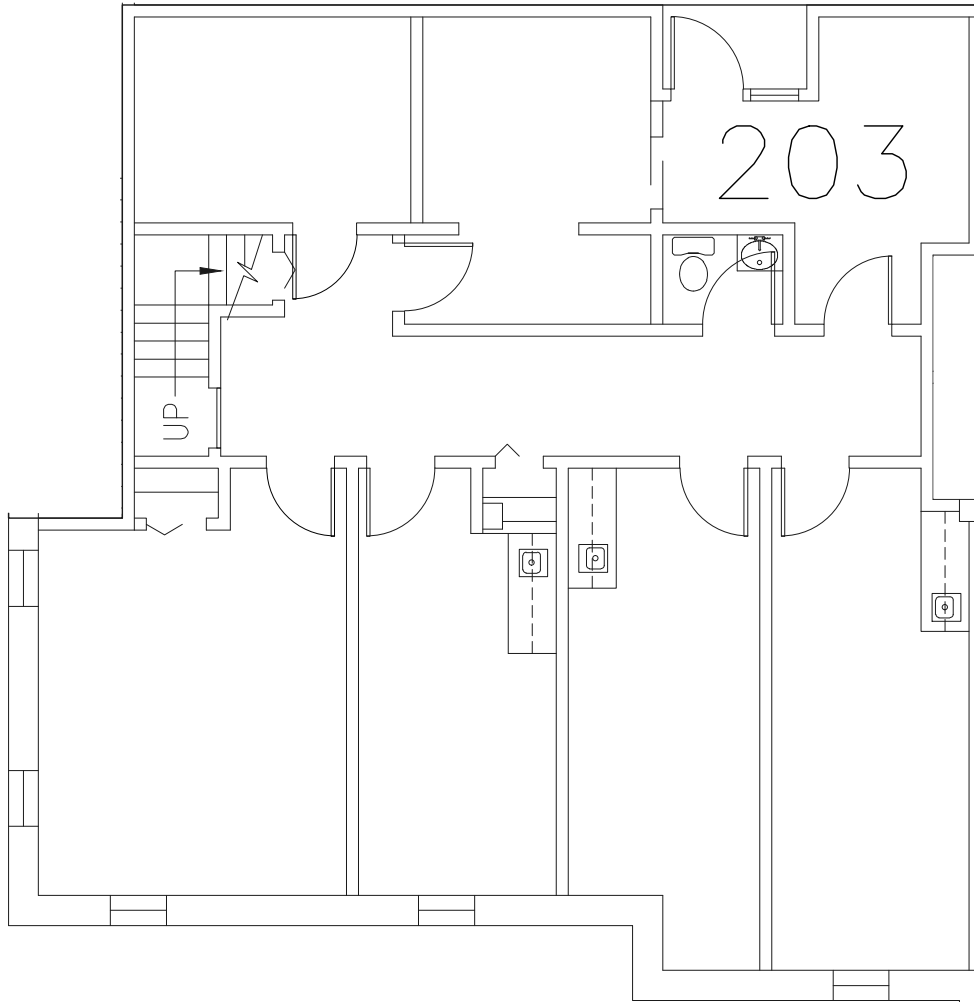


KEY PLAN
NO SCALE



PARTIAL SECOND FLOOR PLAN
SCALE: 1/8"=1'-0"

ALL WALL DIMENSIONS REQUIRE FIELD VERIFICATION

SUITE 203

1,636± R.S.F.

TOWN OF GUILDERLAND
ALBANY COUNTY * NEW YORK

1873 WESTERN AVENUE
PARTIAL SECOND FLOOR PLAN

DESIGNED BY _____

DRAWN BY RMS

REVIEWED BY _____



DATE 02/26/17

SCALE AS NOTED

SHEET 1 OF 1