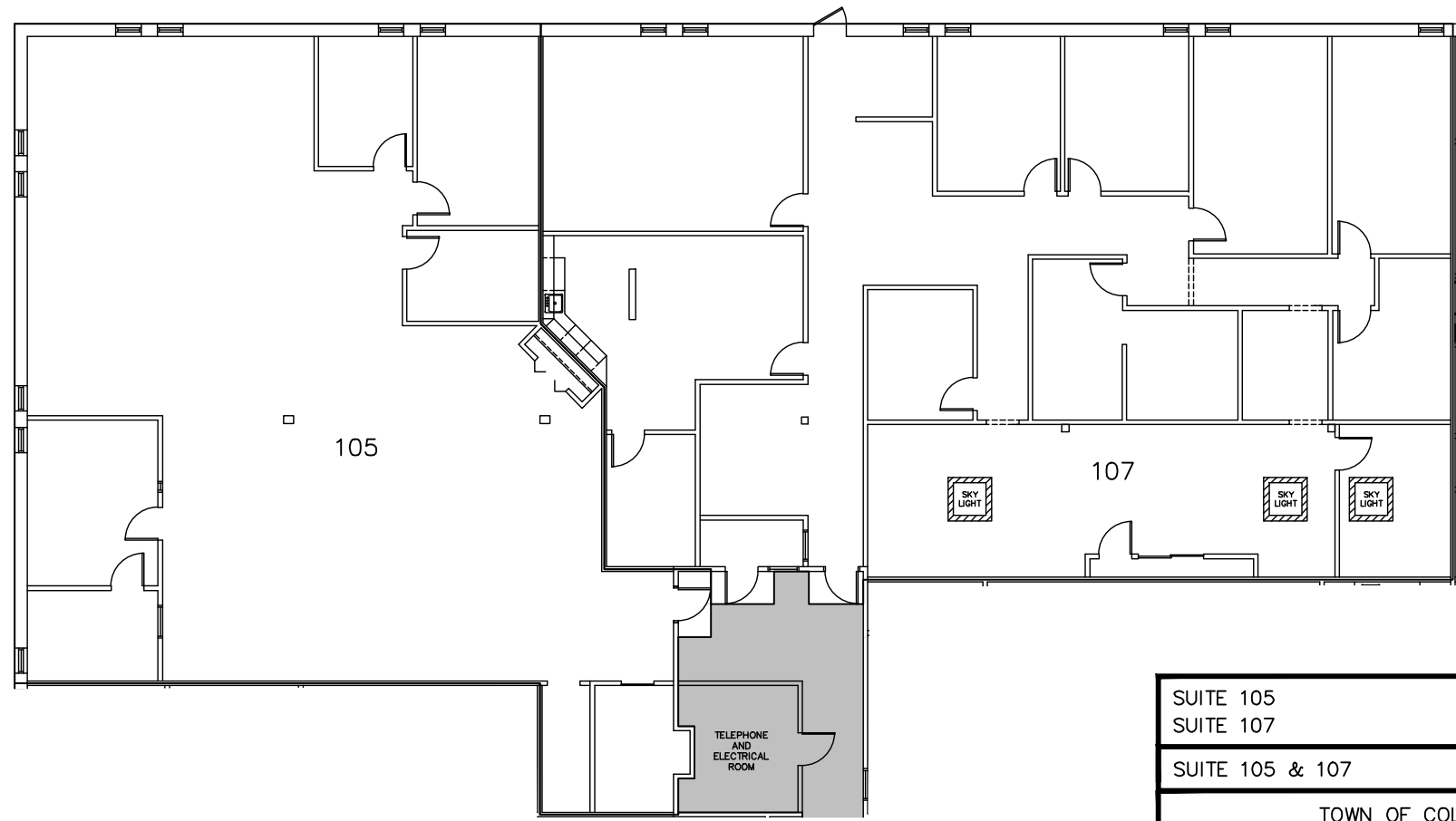


KEY PLAN
NOT TO SCALE



PARTIAL FIRST FLOOR PLAN
SCALE: 1/16"=1'-0"

SUITE 105	3,692± R.S.F.
SUITE 107	4,592± R.S.F.
SUITE 105 & 107	8,284± R.S.F.

TOWN OF COLONIE
ALBANY COUNTY * NEW YORK

24 COMPUTER DRIVE WEST
PARTIAL FIRST FLOOR PLAN

ALL WALL LOCATIONS AND ROOM DIMENSIONS REQUIRE FIELD VERIFICATION.

DESIGNED BY _____		DATE 10/15/14
DRAWN BY ECS		SCALE NTS
REVIEWED BY _____		SHEET 1 OF 1