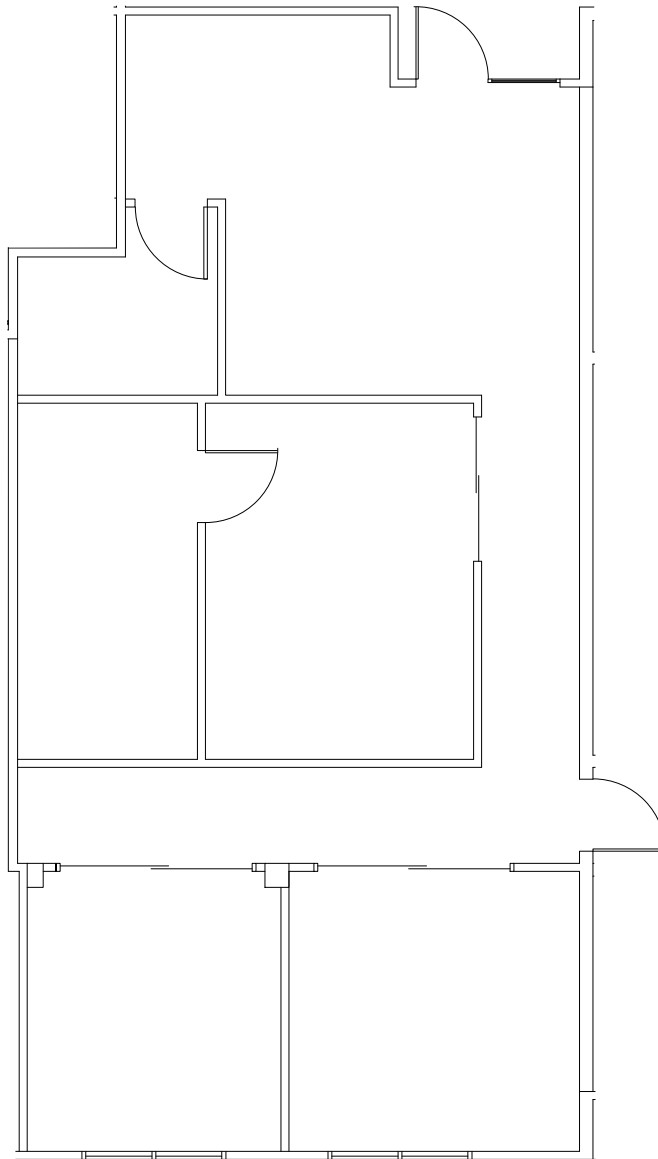


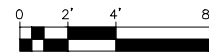
**KEY PLAN**

NOT TO SCALE



**PARTIAL SECOND FLOOR PLAN**

SCALE: 1/8" = 1'-0"



SUITE 204

1,264± RSF

TOWN OF GUILDERLAND  
ALBANY COUNTY \* NEW YORK  
**CARPENTER COMMONS**  
2568 WESTERN AVENUE  
PARTIAL SECOND FLOOR PLAN

DESIGNED BY \_\_\_\_\_  
DRAWN BY HSB  
REVIEWED BY \_\_\_\_\_



DATE 01/18/18  
SCALE AS NOTED  
SHEET 1 OF 1

ALL WALL LOCATIONS AND ROOM DIMENSIONS REQUIRE FIELD VERIFICATION