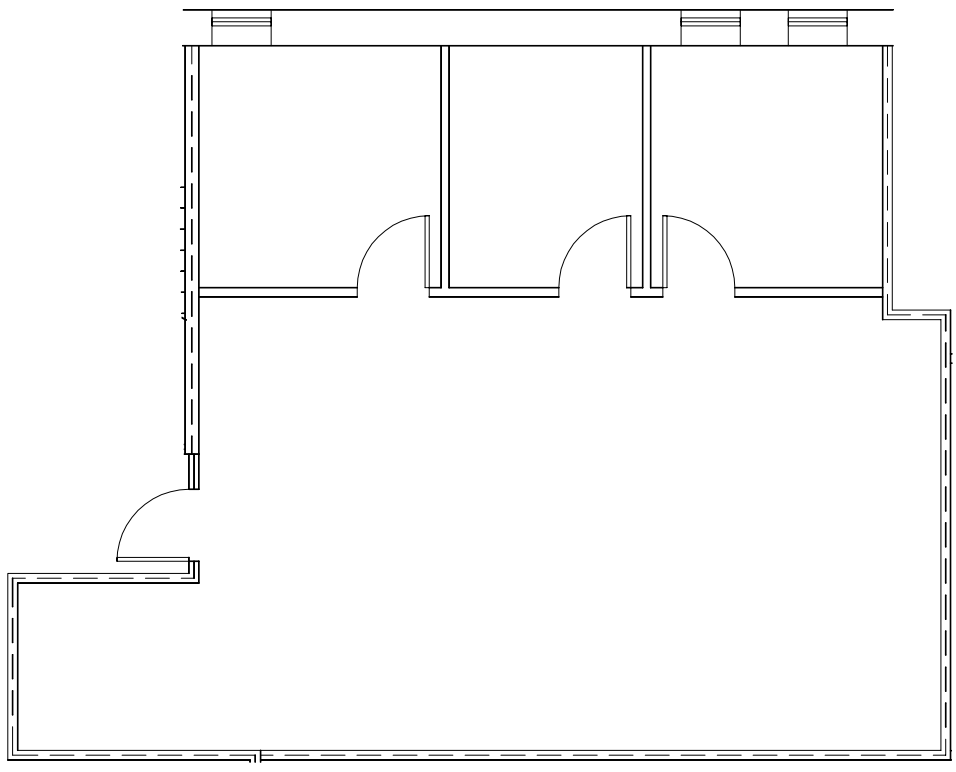


KEY PLAN
NO SCALE



PARTIAL FIRST FLOOR PLAN
SCALE: 1/8"=1'-0"

SUITE 106 1,190±R.S.F.

TOWN OF COLONIE
ALBANY COUNTY * NEW YORK

2 COMPUTER DRIVE WEST
PARTIAL FIRST FLOOR PLAN

ALL WALL LOCATIONS AND ROOM DIMENSIONS REQUIRE FIELD VERIFICATION

DESIGNED BY _____
DRAWN BY ECS
REVIEWED BY _____



DATE 04/17/14
SCALE AS NOTED
SHEET 1 OF 1